

Client _____ Quantity _____
 Project _____ Position _____

FUN 600

Model: F60/60PCE/T

Cod: MP01012121001



Technical data

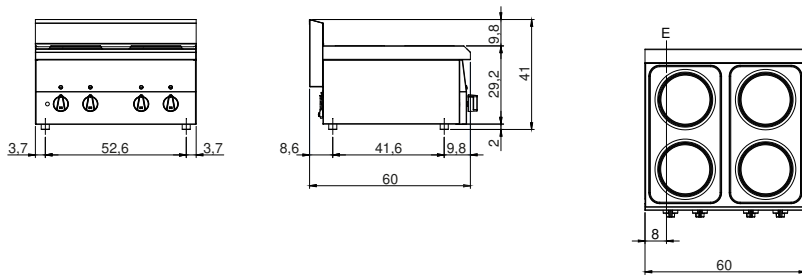
Modularity:	Top
Dimension (mm):	600x600x300
Total electric power (kW):	8
Electric power (V):	380-415
Ampere (A):	18,5
Phases:	3N
Cable section (mmq):	5G2,5
Frequency (Hz):	50-60
Net volume (m3):	0,108
Packing dimensions (mm):	676x695x630
Gross weight (kg):	25
Gross volume (m3):	0,296

Features

Working top:	Made of AISI 304 stainless steel with a thickness of 8/10 mm
Knobs:	Knobs are made from a sturdy heat-resistant polymer blend
Flue:	Made in a single piece, which facilitates the alignment of the modules

Electric hob with 4 plates Top with deep funnel in AISI 304 stainless steel; covering in AISI 430 stainless steel thickness 8/10; bottoms and internal parts in anti-corrosion material (aluminised sheet metal). Hob with cast iron electric plates \varnothing 180 mm with stainless steel edge sealed to top. Six different temperature adjustments for each plate. Indicator lights to show electrical power supplied and plates in operation. Power: 4 plates x 2 kW ea. Total power 8 kW. Electrical power supply V AC 400+3N 50÷60 Hz.

Technical draw



E: Electric power