

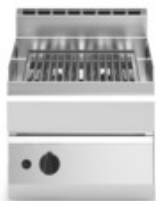
Client _____ Quantity _____

Project _____ Position _____

FUN 650

Model: F65/40GRGI/T

Cod: MP01412112002



Technical data

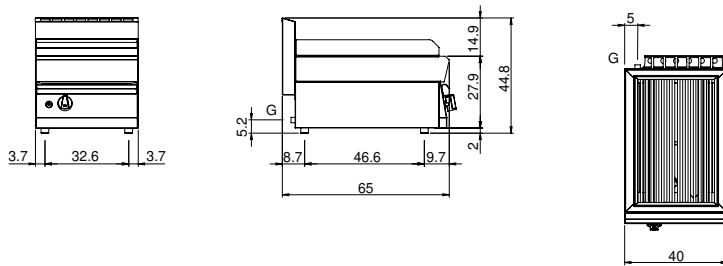
Modularity:	Top
Dimension (mm):	400x650x300
Total gas power (Kcal/h):	6449
Total gas power (kW):	7,5
Cooking zone dimensions 1 (LxD mm):	500x320
Net volume (m3):	0,078
Packing dimensions (mm):	477x776x612
Gross weight (kg):	34
Gross volume (m3):	0,227

Features

Grill:	In stainless steel
Working top:	Made of AISI 304 stainless steel with a thickness of 10/10 mm
Knobs:	Knobs are made from a sturdy heat-resistant polymer blend and are equipped with liquid anti-leakage washer
Upright Splash guard:	On two sides
Kit Gas:	Natural gas conversion kit 30/50 m/bar (tested with natural gas G20)

Griglia a gas Top. Piano in acciaio inox AISI 304 spessore 8/10; involucro in acciaio inox AISI 430 spessore 8/10; fondi e parti interne in acciaio AISI 430; rinforzi interni eseguiti in materiale anticorrosione (lamiera alluminata). Griglia con piano di cottura in acciaio inox. Bruciatore in acciaio inox (nr. 1x7,5 kW). Rubinetto gas valvolato in sicurezza con termocoppia e bruciatore pilota per l'accensione automatica del bruciatore. Accensione piezoelettrica del bruciatore. Bacinella raccogligrassi in acciaio inox. Potenza totale 7,5 kW.

Technical draw



G: Gas connection 1/2"