

Client _____ Quantity _____
 Project _____ Position _____



ROC 1100

Model: R110/120PCGB/P

Cod: MP01015115055

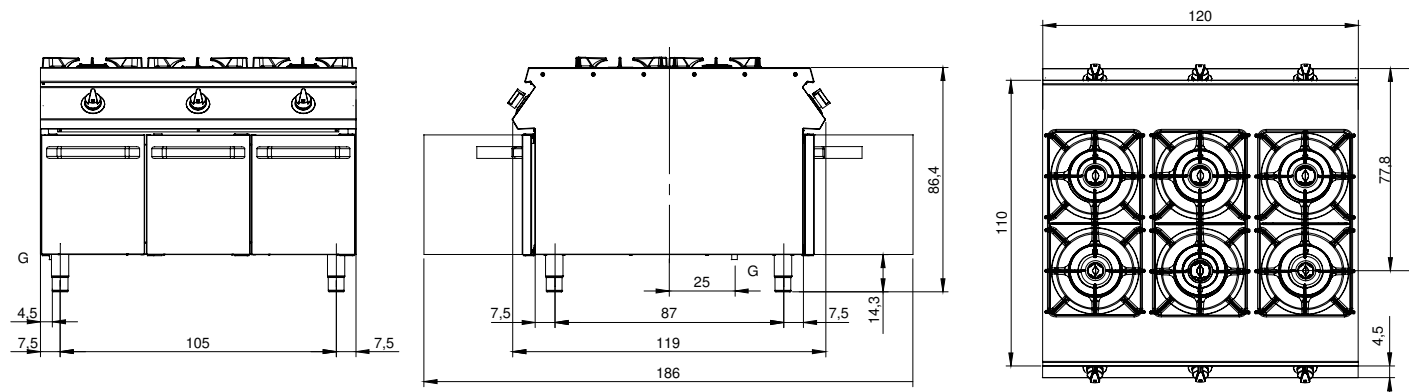
Technical data

Modularity:	On cabinet with doors
Dimension (mm):	1200x1100x870
Total gas power (Kcal/h):	33534
Total gas power (kW):	39
Gas connection:	1/2"
Net volume (m3):	1,148
Packing dimensions (mm):	1280x1272x1274
Gross weight (kg):	196
Burner power 1 (kW):	5,5
Burner power 2 (kW):	7,5
Burner power 3 (kW):	7,5
Burner power 4 (kW):	5,5
Burner power 5 (kW):	5,5
Burner power 6 (kW):	7,5
Gross volume (m3):	2,074

Features

Burners:	Single and double crown cast iron burners with brass burner cap
Grill:	For single burner in cast iron or stainless steel (optional) dishwasher safe
Working top:	Rrealizzato in acciaio inox AISI 304 spessore 2 mm con bacinelle in acciaio inox
Knobs:	Made of aluminum with IPX5 water protection
Handles:	The brushed aluminum handles allow for a secure and sturdy grip with a ergonomic lines
Flue:	Made of AISI 304 stainless steel
Kit Gas:	Natural gas conversion kit 30/50 m/bar (tested with natural gas G20)

Technical draw



G: Gas connection 1/2"