



Client \_\_\_\_\_ Quantity \_\_\_\_\_

Project \_\_\_\_\_ Position \_\_\_\_\_

## ROC 1100

**Model:** R110/80AGGI

**Cod:** MP01495115002

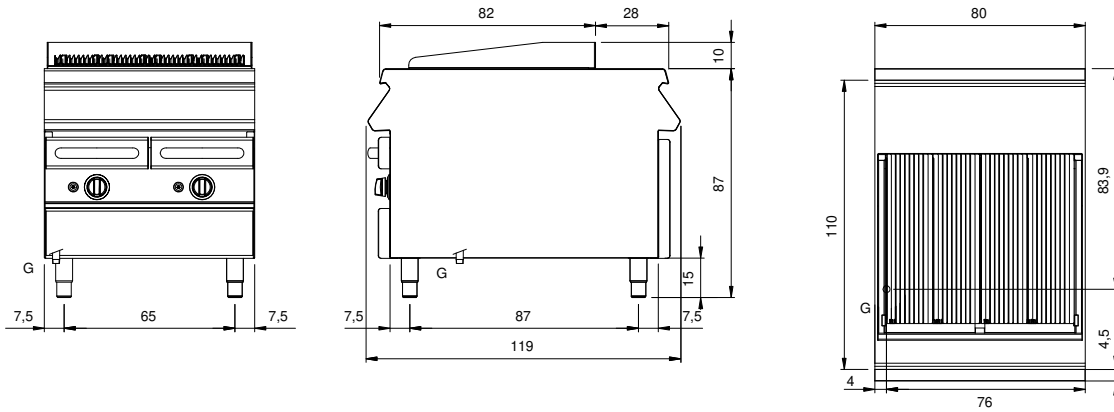
### Technical data

<b>Modularity:</b>	On closed cabinet
<b>Dimension (mm):</b>	800x1100x870
<b>Total gas power (Kcal/h):</b>	18917
<b>Total gas power (kW):</b>	22
<b>Cooking zone dimensions 1 (LxD mm):</b>	n°2 981.096.00 (178, mm)
<b>Cooking zone dimensions 2 (LxD mm):</b>	n°2 981.096.00 (178, mm)
<b>Gas connection:</b>	1/2"
<b>Net volume (m3):</b>	0,766
<b>Packing dimensions (mm):</b>	880x1272x1274
<b>Gross volume (m3):</b>	1,426

### Features

<b>Grill:</b>	In stainless steel
<b>Working top:</b>	Made of AISI 304 stainless steel with a thickness of 2 mm
<b>Knobs:</b>	Made of aluminum with IPX5 water protection
<b>Liquid collection container:</b>	Removable and dishwasher safe
<b>Upright Splash guard:</b>	On three sides
<b>Kit Gas:</b>	Natural gas conversion kit 30/50 m/bar (tested with natural gas G20)

**Technical draw**



**G:** Gas connection 1/2"